

Reminder

Preparing Video for Multimedia

Remember the following points when preparing material for multimedia applications

Shooting

- The viewable screen area is likely to be far smaller than for TV – therefore make sure your subject material fills the screen
- Try to avoid unnecessary camera movement wherever possible. Best to use a tripod.
- Try to avoid bright whites, blues and yellows – they compress less well than other colours
- Try to avoid fussy detail – it will be lost at higher compression rates
- Try to use plain colour as a background for your subject material – your subject will show up better
- Ensure the audio is recorded clearly
- Unless you have a special reason, use 4.3 aspect ratio

Editing

- Avoid dissolves or any fancy edits – use straight cuts wherever possible
- Avoid flying graphics or text
- For titles, use fonts that are easy to read

End of reminder

Encoding is the process of compressing video.

The best way to do this is to use **Cleaner** or **Cleaner EZ**. These are installed on the machines in PG04.

1. Exporting from Final Cut Pro

Once you have edited your video in **Final Cut Pro**, you need to export your sequence as a high quality QuickTime movie. In **Final Cut Pro**, select the sequence you want to compress by clicking on the appropriate tab on the timeline. Then go:

File > Export > Final Cut Pro

Make sure **Current Settings** are selected in the **Save** window.

This saves your sequence as a high quality QuickTime movie ready to be imported to **Cleaner** or **Cleaner EZ**.

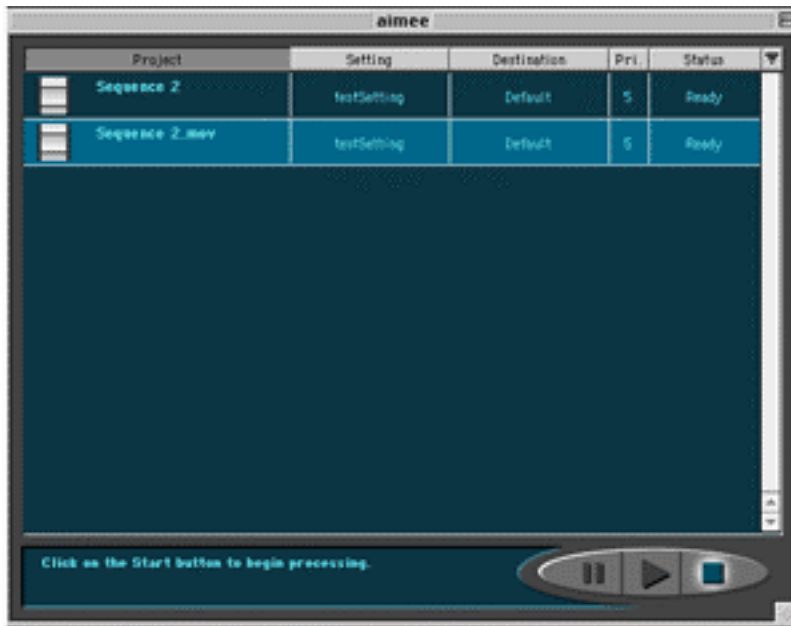
2. Importing to Cleaner (Cleaner EZ is similar)

Open Cleaner

Drag and drop the file you have just created in Final Cut Pro to the Cleaner Project List (or go **File > Open**). The file will appear in the Project List window.

3. Destination

Double-click in the **Destinations** box to select the folder in which your compressed movies will be saved.



4. Preparing in Cleaner

The amount of compression depends on the distribution medium for your project. For example, if you are authoring for CD, the movie will need less compression than for the web. Cleaner has a wizard to help you make the right choices.

Settings

Double-click in the **Settings** box within the Cleaner **Project List** window. Doing this will bring up the settings wizard. You need to make sure know how the movie will be distributed to answer all the questions. In certain cases you are able to make several selections at once. Doing this will create several compressed movies.

4.1 Delivery Medium

Choose either CD-ROM, DVD-ROM or WWW.



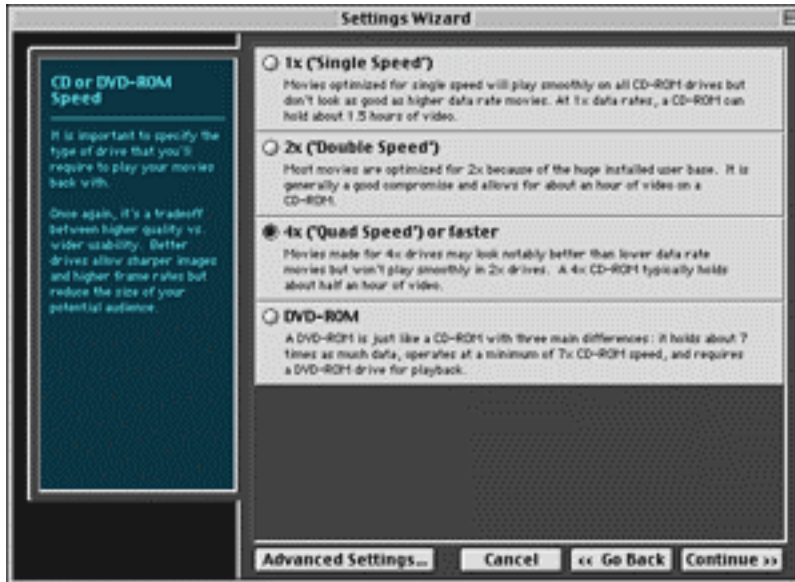
4.2 Target Machines

Video is compressed more heavily for low-end machines. However, the quality will be poorer. Choose the highest setting possible for your end user or, create several movies at different settings.



4.3 CD or DVD-ROM

The higher the speed of the CD drive, the better the quality will be. 2X is usually a good compromise.



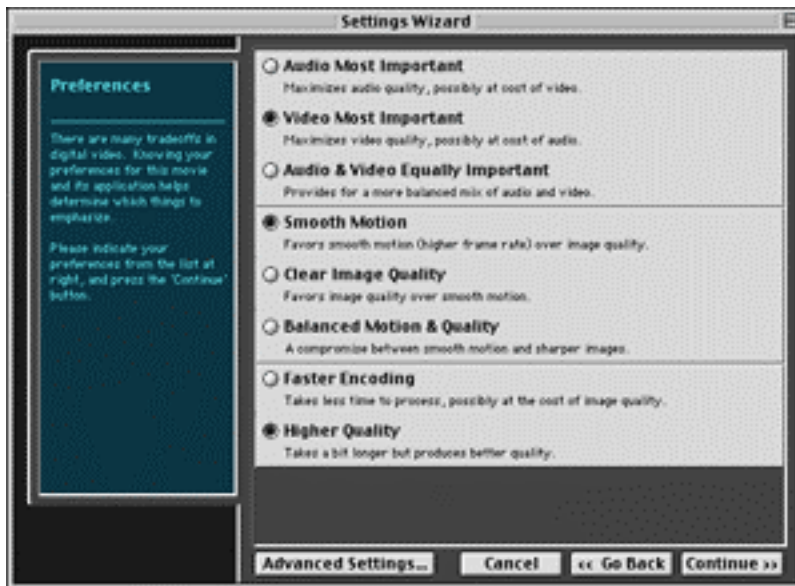
4.4 File Format

Choose QuickTime.



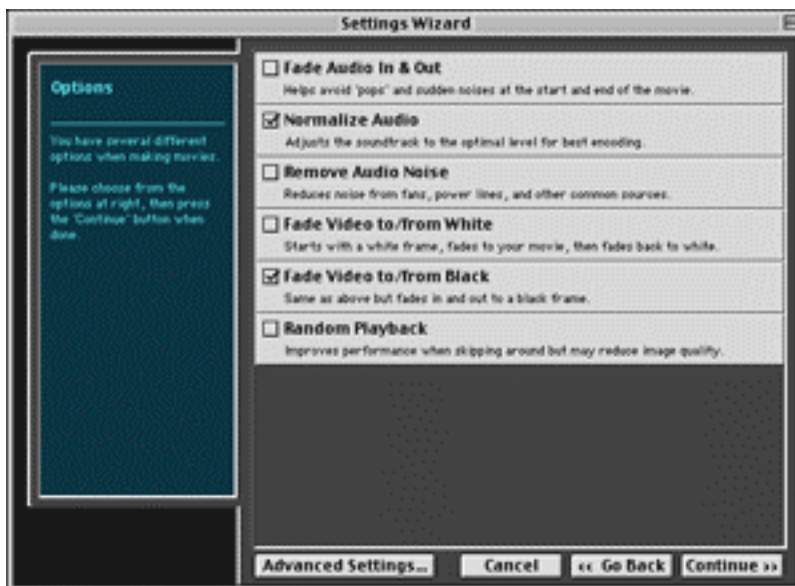
4.5 Preferences

Self explanatory.

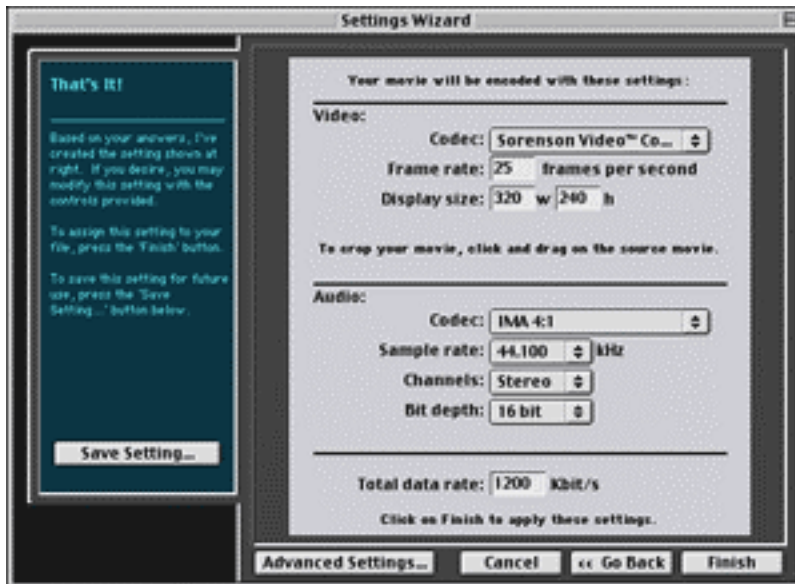


4.6 Options

Most of these are self-explanatory. Normalize audio might be helpful if you have wide variations in sound levels.

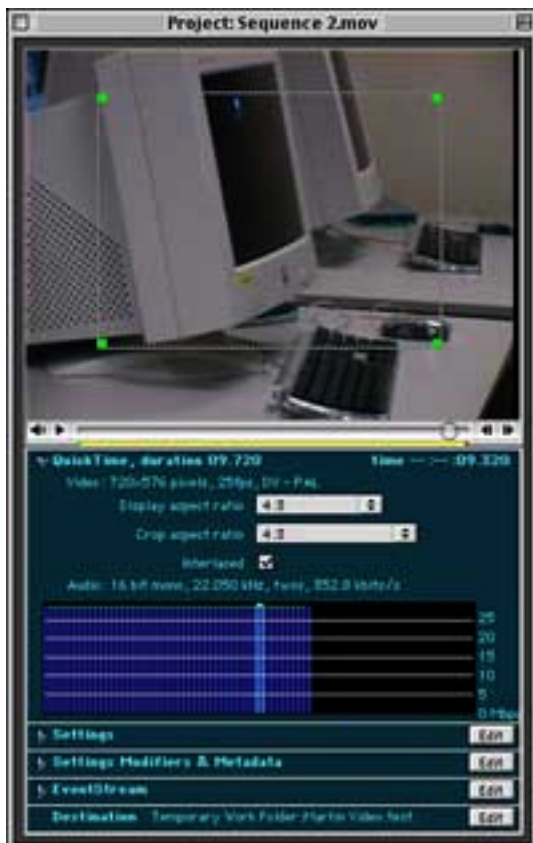


4.7 Summary



5. Cropping

You can view your uncompressed movie from the main window and crop as necessary. To crop your image, click and drag on the image. This creates a rectangular selection.



Note: by default, the cropping rectangle has the same aspect ratio as the uncompressed movie. This ensures the cropped movie is not distorted.

If you want to crop an area of your movie using a rectangle of different proportions to the original, you can **change** the **aspect ratio** of the **cropping rectangle**. To do this look under the main window to where the first set of parameters are listed. Change the aspect ratio as appropriate. Be aware that the resulting movie will **scale** to the **same aspect ratio** as the **original**. The cropped area will therefore appear **distorted**.

To avoid distortion you need to change the **aspect ratio** of the **viewable area** as well. The settings for this are in the same place. If you make the **cropping rectangle's** aspect ratio the **same** as the aspect ratio for the **viewable area**, the resulting movie will have the correct proportions and will be cropped appropriately.

Letter Box Movies

If your movie has been created in the **wide screen format** using certain **mini DV** cameras, **black bars** may have been added to the top and bottom of the image. These increase file size and should be removed. This can be done in **Cleaner**, as explained above. However, some of the image will be lost or distorted. If this is not acceptable, remove the bars in Final Cut Pro.

6. Setting In Point / Out Points

You can use the main window to set in and out points if your movie does not start or finish in the right place. Drag the slider to the point at which you want the movie to start. Then go:

Edit > Set In Point

Drag the slider to the point at which you want the movie to finish. Then go:

Edit > Set Out Point

7. Processing

Once you have entered the correct settings your movie is ready to be processed. If you have just one movie to encode, simply hit the **Play** button at the bottom of the **Project List** window. However, if you have several movies to encode, it will be faster to set up the all the movies in the window first and then hit the **Play** button. They will be encoded according to the priority number they have been given. This can be set by double-clicking in the **Priority** box in the **Project List** window.

Saving Settings

If you have many movies to encode, all with the **same settings**, you can save the settings you have chosen for the first movie and reuse them. To do this, in the left hand pane of the **Settings Wizard**, there is a **Save Settings** button. This appears on the **last page** of the **Settings Wizard**. Click on this and select the **Wizard folder** to save your settings.

When you want to reuse your settings, double-click in the **Settings Box** in the **Projects List** window. This will bring up the **Settings Wizard**. In the left hand pane there will be a **Select Settings** button. Click on this and choose your custom settings from the **Wizard folder**.